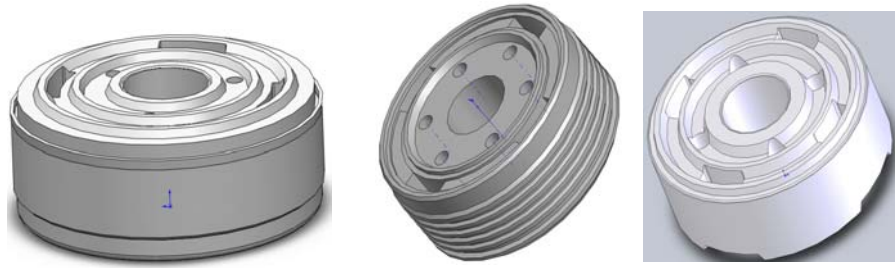
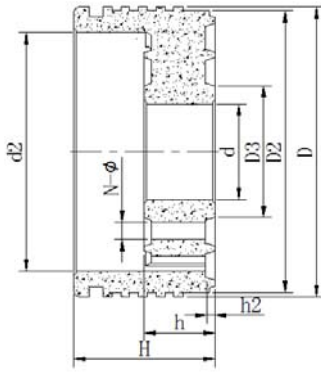


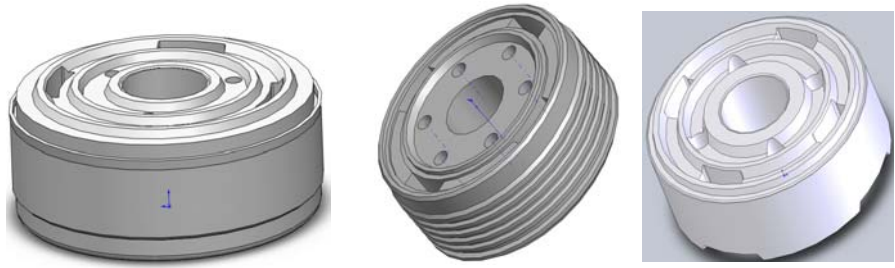
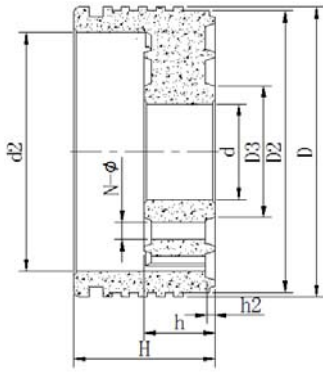
宁波顺达粉末冶金工业有限公司

活
塞

产
品
规
格
表



规格尺寸 编号代码	D	D2	D3	d	d2	H	h	h2	N-Φ	方孔及 数量	备注
SD023	21			6	17	12	7	1.5		4	
SD027	24.6	22.2		10	19	16.5	9.5			4-5	
SD034	20	18		6	14.5	10.5	6	1		4-3.5	
SD082	29.3	28.35		8	24	14	7	0.9	N-Φ	4-6	
SD093	26.8	24.9	11	8	21.5	14	7		3-1.9	4-8	
SD155	29.7	27.4		12	22.9	15	8			4-5.8	
SD187	24			8	20	12	7		4-1.5	4-6	
SD206	29.35	28.4	12	8	24.5	14	8		N-Φ	6-5	
SD207	24.35	23.65	11	8	20	13.5	6		N-Φ	4-6	
SD256	45		18	12	37.5	22	10		N-Φ	-	内外小孔
SD259	25			8	20	12	6		5-1.2	4-6	
SD303	34	33		10	29.5	14.12	8.7		N-Φ	4-7.5	
SD325	35		14	10	28	19	9		N-Φ	4-7.5	
SD337	29.6		13	10	24	17	8		3-2.0	3-4.4	
SD357	35.2	34.4	13	10	27.5	14	8		N-Φ	4-8	
SD411	29.7	27.3		12	23	15	8		-	4-6	
SD412	25	22.2		8	19	14	8		-	4-4.4	
SD415	29.3	28.4	12	8	24.5	14	8	0.8	N-Φ	6-5	
SD476	29.7	28	12.5	10	25	15	8	0.6	-	4-4/4-6	内外方孔
SD512	49.7	18	12	40	22	10	1		6-3.0/10-3.0	-	内外小孔
SD515	20			6	14.5	10.5	6	1.5	-	4-3	
SD534	29.2	28.3	13	10	24.6	14	7.2	0.6		3-1.8	4-3.3
SD529	20	17.4		6	15	11	6		4-2.0	-	
SD565	29.25	28.3		8	23	16.6	7		-	4-5	
SD586	30	28	11.2	8	24.5	15	8	0.85	N-1.9	-	
SD591	31.35	30.15	12	8	24.5	14	8	0.8	N-Φ	6-5	
SD595	24.7		11	8	20.7	12.5	6	1.1	4-2.0/8-2.0	-	内外小孔
SD607	35.2	34.4		8	28	18	7	0.9	N-Φ	4-8	



规格尺寸 编号代码	D	D2	D3	d	d2	H	h	h2	N-Φ	方孔及 数量	备注
SD610	31.3			10	26	14.1	8.5	1.0	10-2.0	-	
SD619	39.35	38.15	18.5	14	34	16	10	1.1	N-Φ	4-10	
SD623	31.4	30	14.5	10	25.6	13	6.5	1.0	5-1.6	6-3.2	
SD627	24.3	23	11.5	8	20	14	8	0.7	6-1.6	4-7	
SD641	26.2	25.4	10.5	8	21.5	15	8	0.9	N-1.8	4-7	
SD651	29.2	28.2	11	8	24	14	7	0.9	6-2.6	4-6	
SD660	39.6	35.2		14	32	18	10		6-4	-	
SD680	27	26.7	-	7.9	23	17.5	9	1.2		4-2.3/4-4.5	内外方孔
SD686	26.3	25	11.5	8	20	14	8	0.7	6-1.6	4-7	
SD687	34.3	33.4	13.2	10	28	14	8	0.7	6-1.6	4-7	
SD688	45	-	18	12	40	22	14	1.0	6-4.0	异形方孔	
SD703	30			7.9	23	17.5	9	1.2		4-2.3/4-4.5	内外方孔
SD708	24.3	23.6	11	8	20	12	6	0.8		4-4.8/4-6.0	内外方孔
SD743	31.5	30.4	11.1	8	25.7	15	8.8	0.5	4-2.5	4-4.55	
SD744	29.6	29.15	11.1	8	25.69	11.9	6.8	0.8	8-2.6	6-4.2	
SD746	29.25	28.35		8	24	14	7	0.9		4-6.5/4-6	
SD778	31.5	31	13.7	10	25	14	8	0.8	N-2.4	6-5.0	
SD781	29.5	29	13.7	10	25	14	8	0.8	N-2.4	6-5.0	
SD789	31	30.3	14	10	26.4	15	8	0.9	9-2.0	4-9.0	
SD793	35	34.3	14	10	30.4	15	8	0.9	12-2.0	4-7.5	
SD811	24.8		10.3	8	20	12	6	1.0	3-1.5/6-1.5		
SD827	34	33.1	12.5	8	28	15	7	0.8	6-2.2	6-5	
SD829	26.5	26	10.95	8	22.4	11.9	6.8	0.6	4-2	4-3.6	
SD864	24.5	23.4	10.95	8	20.6	15	8.8	0.6		4-9.0	
SD887	27			8	23	17.5	9.2	1.4		4-9.0	
SD888	30			8	23	17.5	9.2	1.4		4-9.0	
SD889	32			8	23	17.5	9.2	1.4		4-3.5/4-4.9	内外方孔
SD896	49.8	47	21.5	14.4		19.5	11	0.8	12-2.3/12-2.4		

