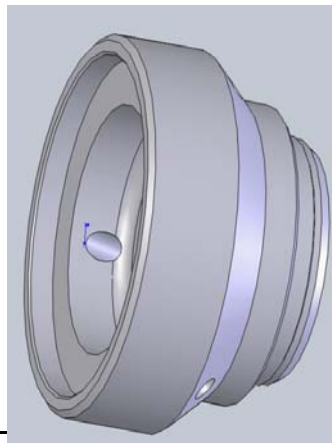
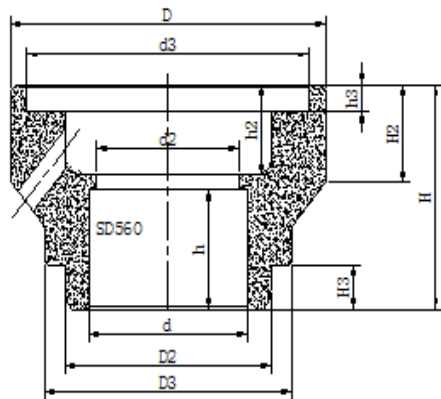


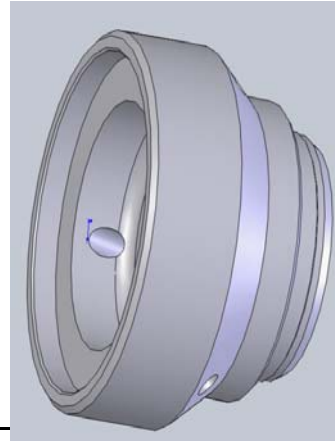
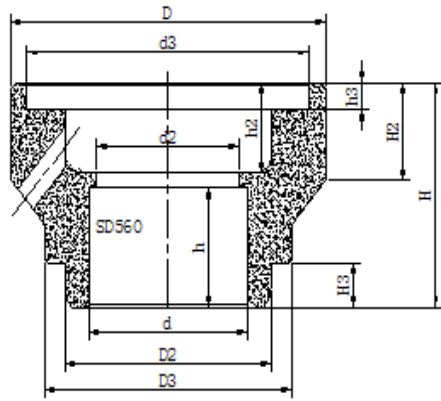
宁波顺达粉末冶金工业有限公司

导向器  
产品规格表





规格尺寸 编号代码	D	D2	D3	d	d2	d3	H	H2	H3	h	h2	h3	小孔	备注
SD038	36	25	33.7	14.4	13.2	32	24	14	5.6	10.5	12	2.9	3-3.5	
SD038-1	36	25	33.7	13	12	32	24	12	5.6	10.5	12	3	3-3.5	
SD039	39.2	30	36	25	23	35	25.5	15	7	13	11	3	3-3.0	
SD039-1	41.6	32	36	25	23	35	25.5	15	7	13	11	3	3-3.5	
SD080	39.6	30		14.4	13	35.5	22	12	4	10	11	2.8	3-3.8	
SD352	39	30	36	14.4	13.2	32	23.7	13.35	6	13.2	9.2	2.8	3-3.5	
SD354	43	35	38	18	15.8	39	23.4	12.5	4	10.2	12	3.1	3-3.0	
SD360	46.8	35		18	15.2	39	27	16	4	14.8	11	3.1	3.0	
SD417	42	25	32	14.5	13.5	37	21	10	5.5	8	11.5	2.8	3-2.0	
SD419	46	32		23	21	41.5	26.5	(16.5)	5	13	12	3.6	4-3.0	
SD420	37.2	30	33.7	14.4	13.2	32	24.5	11	6.1	10.5	12	2.8	3-3.5	
SD422	58	50	54.5	28	26	49	30	14	6	15.2	13.3	5.4	4-3.5	
SD486	36	30	33.7	14.4	13.2	32	24	(12)	6	10.5	12	2.9	3-3.5	
SD551	44.5	30	39	23	20.8	37	30	15.2	6	16	12	3.4	3-3.5	
SD552	46.9	32	36	25	22.8	41	30	13	6	16	12	3.5	3-3.5	
SD554	40.9	30	36	23	20.8	37	30	13	6	16	12.8	3.4	3-3.5	
SD560	45.9	30	36	23	20.8	41	30	13	6	16	12	3.5	3-3.5	
SD563	46	32	36	25	23	41	30	14	8.5	17.5	10	3.5	2-3.0	
SD574	44	30	34	20	19	35.8	28	12	9	15.2	11.3	3.3	3-3.0	
SD575	48	32	40	25	23	41	24.5	10	8	12.5	10.5	3.5	4-3.0	
SD576	39	25		20	18.7	34.8	26.5	16	6	15.5	10	3.4	3-2.5	
SD577	44	30	33	23	21	39	27.7	10	10.3	15.2	11	3.6	3-2.5	
SD578	46	32	35	23	21	41.3	27.7	9.5	10.7	15.2	11	3.5	3-2.5	
SD579	43	30	33	17	16	39	26.2	10	9.2	12.2	12.5	3.4	3-2.5	
SD587	36	25	30	14.4	13.2	32	26.5	13	6	13.2	12	2.8	3-3.5	
SD589	44	30		23	21	37	32	11	11.5	13	17.5	3.2	4-2.0	

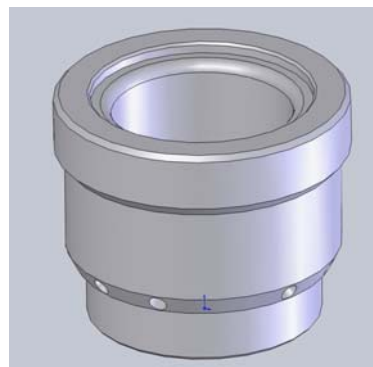
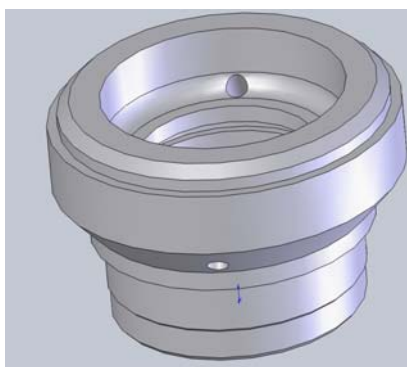
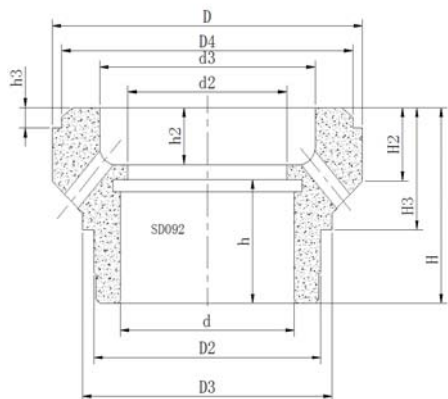


规格尺寸 编号代码	D	D2	D3	d	d2	d3	H	H2	H3	h	h2	h3	小孔	备注
SD592	43	30	36	14.4	13.2	36	26.2	13	5.6	11	12.5	3.2	3-2.5	
SD592-3	43	32	36	17	15.5	39	26.2	13	5.6	12	12.5	3.3	3-2.5	
SD594	39	30	33	23	21	34	26.4	12.4	9	15.2	9.3	3.0	3-2.5	
SD594-1	41	30	33	23	21	37	27.4	11.4	10	15.2	10.2	3.4	3-2.5	
SD596	48.7	32		17	15.5	39	26.2	14.5	5.6	12	12.5	3.1	3-2.5	
SD601	36	30	32	14	11.8	32	27	16.5	6	10.4	12	3.0	4-3.0	
SD602	40	30	34	16.5	14.5	34	23	10.5	4	10.4	10	3.2	4-3.0	
SD622	37.7	25	33.7	14.4	13.2	32	24	(10)	5.6	10.5	12	2.9	3-3.5	
SD638	50	32	38	25	22.8	41	30	13	6	16	12	3.5	3-3.5	
SD669	39	27	32	14.4	13	32	20.5	10	6	8.6	10.3	2.9	3-3.0	
SD679	48	35	42	28	26	42	28	9.3	5	15.5	11	3	4-3.0	
SD684	56.3	36	39	28	26	48.5	30	14.4	6	15.2	13.3	3.9	3-3.5	
SD685	46.9	30	36	23	20.8	41	28	11	6	16	10	3.5	3-3.5	
SD685-1	46.9	30	36	23	20.8	41.2	30	13	6	16	10	3.7	3-3.5	
SD691	51.9	36	39	28	26	42	30	14	6	15.2	13.3	3	3-3.5	
SD695	36.3	25	-	14.4	13.2	32	19	7	5	8	9.8	2.8	2-3.0	
SD697	38	25	30	14.4	13.2	32	22.5	(10.5)	6	10.5	11	3	3-3.0	
SD715	40	25		20	19	34.8	24	13.38	6	12.5	10	3.2	3-3.0	
SD718	47	35	39	25	23	41	28	12.5	5	15	11.5	3.3	4-3.0	
SD753	46	32	36	25	22.8	41	30	13	6	16	12	3.5	3-3.5	
SD764	41.5	30	34	23	21	34.2	27	(14.1)	6.2	14.5	11	3	4-2.5	
SD765	38.2	25	33.7	14.4	13.2	32	24	12	5.6	10.5	12	2.9	3-3.5	
SD771	39.6	30	34	25	22.8	35	23.15	12	4.65	12.5	7.65	2.85	3-2.5	
SD782	41	30	36	17	15.5	34.8	26	12.7	5.7	12	12.2	3	3-2.5	
SD790	50	32	42	25	23	41	27	12.5	5.5	15.5	10.5	3.5	4-5.0	
SD791	49	36	42	28	26	42	27	12.5	5.5	15.5	10	3.2	4-5.0	









规格尺寸 编号代码	D	D2	D3	D4	d	d2	d3	H	H2	H3	h	h2	h3	小孔	备注
SD092	41	30	33	38.5	23	21	28.5	24	9	15	15.2	7	2.5	4-2.5	
SD132	57	45	53	-	38	17	35	42	10	32	9	23	-	9-3.5	
SD399	41	30	33	39.5	20	18.5	28	24	10	16	16	6.8	2	3-3.0	
SD400	46	32	36	42.2	25	23	31	22.5	9	13.5	13	8	2.5	4-2.5	
SD423	36	30	-	32	14	12.8	22	16	9	12	8	7	2.5	3-2.0	
SD605	44	30	36	40.6	25	23	31	22.5	9	9	13	8	2.8	4-2.5	
SD624	39	30	33	37.5	25	23	29	24	9.1	15	12.5	7	2.5	4-2.5	
SD750	45.2	30	36	43.5	23	21	33	23	8.5	17	15.5	6.2	1.5	3-4.0	
SD750-1	45.2	30	36	43.2	20	19	33	23	8.5	17	15.5	6.2	2.0	3-4.0	
SD750-2	45.2	32	36	43.2	20	19	33	23	8.5	17	15.5	6.2	2.0	3-4.0	
SD916	46	30	36	42.4	23	21	31	22.5	9	13.5	13	8	2.4	4-2.5	
SD470	40	30	-	36.5	20	18.5	30	20	9.9	14.8	11.8	7	2.8	4-4.0	
SD489	41	30	-	38	23	21.9	30	28	11.2	18	17.5	8	3.2	4-4.0	
SD547	39	25	-	34	13	12	23	14.5	-	9	10	2	2.5	3-2.5	
SD547-1	39	25	-	34	14.4	13.5	23	14.5	-	9	10	2	2.5	3-2.5	
SD547-2	39	27	-	34	13	12	23	14.5	-	9	10	2	2.5	3-2.5	
SD649	30	20	-	27.5	12	10.5	20	16.2	8	3.5	8.2	7	2.5	4-2.0	
SD673	86	65	-	82	28	26	40	33.5	-	28.5	22	8	3	3-4.0	
SD699	54	36	-	51.5	28	26	36	29	14.5	18.5	20.5	6.5	2.7	4-3.0	
SD707	40	30	-	37	23	21.5	30	28	12	18	18	8	3.2	4-4.0	
SD757	41.9	30	-	38.5	23	21	29	23	11	16	15	6	2.5	4-3.0	
SD758	45.9	30	-	42.4	23	21	32.5	22.9	-	10.9	16	2	3.0	3-2.5	
SD795	40	30	-	-	20	18.7	31	17.5	-	10	15.5	1.0	3.5	3-2.5	
SD812	40	25	-	-	15.4	14.3	23	16.5	10.2	12.5	8.7	6.5	-	4-2.5	
SD822	30	20	-	26	12	11	19	14.5	-	11.5	8	5.5	2.9	4-2.0	
SD923	54	36	-	51.5	31	29	-	29	14.5	18.5	20.5	6.5	2.7	4-3.0	
SD948	40	30	-	37	23	21.9	30	18.8	9	14.8	11.5	6	3.2	4-4.0	
SD950	41	27	31	40	20	18.7	27	22	8	16	12.5	8	2	3-2.5	







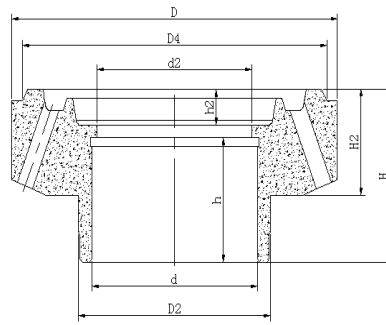
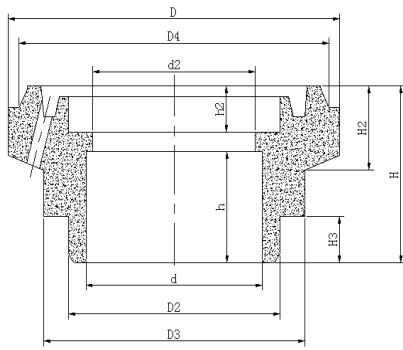








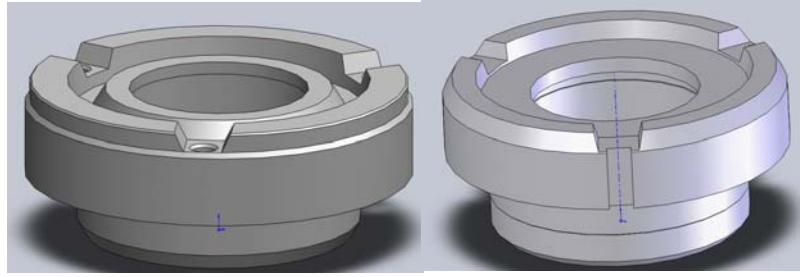
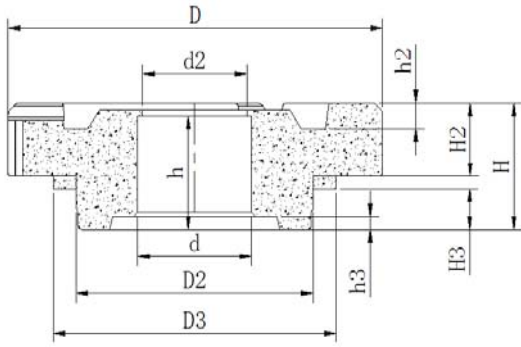




规格尺寸 编号代码	D	D2	D3	D4	d	d2	H	H2	H3	h	h2	小孔	备注
SD719	47	30	37	44	25	23	23	11	6	14.5	6	3-2.0	
SD719-1	47	32	37	44	25	23	23	11	6	14.5	6	3-2.0	
SD796	50.85	35	40	-	28	27	21	12.5	6.5	12.5	7	3-2.0	
SD830	36	27	30.3	34.6	14.495	12.9	15.2	10.7	3.2	8.8	5.2	6-1.4	
SD830-1	36	25	30.3	34.6	14.495	12.9	15.2	10.7	3.2	8.8	5.2	6-1.4	
SD830-2	36	30	33	34.6	14.495	12.9	15.2	10.7	3.2	8.8	5.2	6-1.4	
SD851	51	32	37	49	25	23	25	16	6	14.5	8	3-2.0	
SD904	48	35	39	46	21	20	24.5	10	11	15.5	7	4-2.0	
SD421	38.5	25	-	33.5	14.4	13	17	11	-	9	3.5	4-2.0	
SD478	36	25	-	34.5	15.4	13.4	16.5	11.5	-	9.3	5.5	4-2.0	
SD558	47	30	-	45.7	23	22	23.5	11.5	-	15.3	6.5	3-2.5	
SD668	47	32	-	44	25	23	23	11	-	14.5	6	3-2.0	
SD709	41	30	-	39.5	23	20.8	23	14	-	14.5	7	3-1.8	
SD756	42.7	30	-	39.5	14.5	13	22	13	-	15	5.5	4-2.0	
SD757-1	41.9	30	-	39	25	23	23	13.2	-	15	5.5	4-2.0	
SD759	48	30	-	45.8	23	21	22	13	-	15	5	4-2.0	
SD759-1	48	30	-	46.5	25	23	22	13	-	15	5	4-2.0	
SD760	46.9	32	-	45.5	25	23	22	13	-	15	5	4-2.0	
SD761	37.9	25	-	34	14.4	13	17	11	-	9	5	4-2.0	
SD763	42.9	30	-	41.5	17	16	22	13	-	14	5	4-2.0	
SD766	41	30	-	38.6	14.4	13	18	11	-	10.5	6	3-2.0	
SD769	46.9	30	-	45	23	21	22	13	-	15	5	4-2.0	
SD769-1	45.2	30	-	43.8	23	21	24	15	-	15	7	4-2.0	
SD769-2	46.9	30	-	45.5	25	23	22	13	-	15	5	4-2.0	
SD774	40.85	28	-	-	23	22	20	14	-	12.5	5.5	3-1.5	
SD775	40.85	25	-	-	21	20	20	15	-	12.5	5.5	3-1.5	
SD879	45.2	32	-	43.5	23	22.6	24	13	-	14.8	7.5	4-2.0	







规格尺寸 编号代码	D	D2	D3	d	d2	H	H2	H3	h	h2	h3	小孔	外槽
SD312	47.5	32	38	28	26	19.5	8.5	5.8	15.5	2.3	-	-	√
SD029	32.3	25	-	14.4	13.2	12.5	7.5	-	10	2	1.5	-	√
SD029-2	32	25	-	14.4	13.2	12.5	7.5	-	10	2	1.5	-	√
SD033	39	27	-	14.4	13.5	12	8.5	-	10	3	-	3-2.0	
SD037	38.6	30	-	23	21	18	10	-	15.5	1.0	-	-	√
SD089	32.6	25	-	12.5	-	12.5	8	-	-	4	1.5	-	√
SD178	41	30	-	20	19	15	9	-	13	3	-	3-2.5	
SD248	32.6	25	-	14.5	13	14.5	8	-	10	4.5	1.5	-	√
SD270	42.1	30	-	23	21	19.5	9.5	-	15.3	2	-	-	√
SD271	42.1	30	-	25	23	17	7	-	12.8	2.5	-	-	√
SD279	38.6	30	-	23	20.7	23	11	-	19	1.7	-	2-2.2	
SD290	54.2	32	-	17	15.8	15.5	9	-	13	3.7	-	3-2.4	
SD339	39.2	30	-	14.4	13.2	15.5	9	-	13.2	4	-	-	√
SD346	44.4	32	-	25	23	19	8.5	-	15.2	2.3	-	-	√
SD409	38.6	30	-	30	19	18	10	-	15.5	1.0	-	-	√
SD416	27.1	20	-	12	10.5	9	6	-	8	3	-	3-1.5	
SD467	62.5	50	-	23	21	18	9	-	15.2	4	-	-	√
SD481	37	30	-	23	21	18	9	-	15.2	4	-	-	√
SD519	32.5	20	-	12	10.5	12	6	-	8	3	-	3-1.5	
SD530	27.4	20	-	12	11	9	6	-	8	2.5	-	-	√
SD539	41.2	32	-	25	23	17	8.5	-	15	1.3	-	-	√
SD540	37.2	30	-	23	21.5	17	8.5	-	14.9	1.3	-	-	√
SD541	37.2	25	-	20	18.5	17	9.5	-	14.9	1.3	-	-	√
SD559	31.3	25	-	14.4	13.2	12.5	8.5	-	8.5	2.3	-	-	√
SD588	32	25	-	14.4	13.2	12	8	-	9.7	4	-	-	√
SD590	34.3	25	-	14.4	13.5	11	7.5	-	10.0	2.5	-	3-2.0	
SD606	48.2	32	-	17	15.8	18.5	9	-	12.5	3.5	3	3-3.0	



